



# Intel<sup>®</sup> Arria<sup>®</sup> 10 Device Transceiver PHY Debug Tool

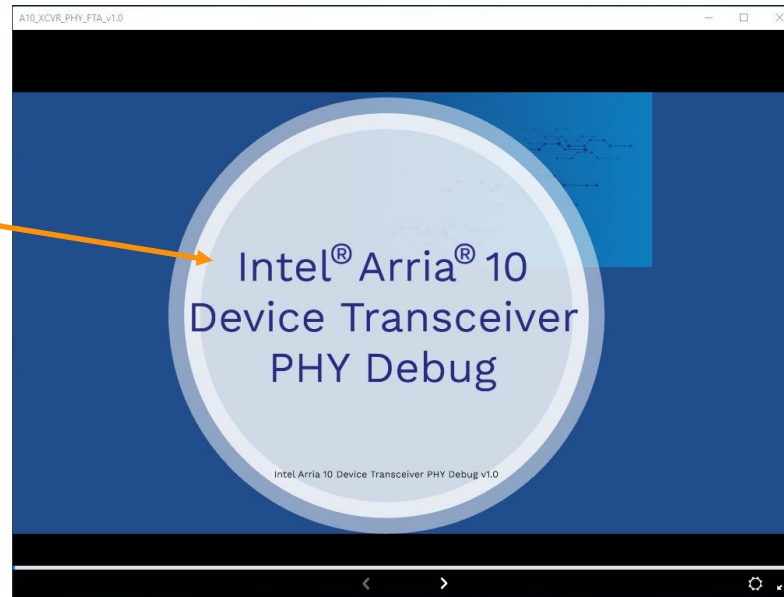
# Agenda

Steps to run the debug tool

# Top Level

After you launch the A10\_XCVR\_PHY\_FTA\_v1.0.exe, you will see the top level as shown below. The revision of the tool is shown at the bottom of the page.

Click the middle of the circle to go to next level

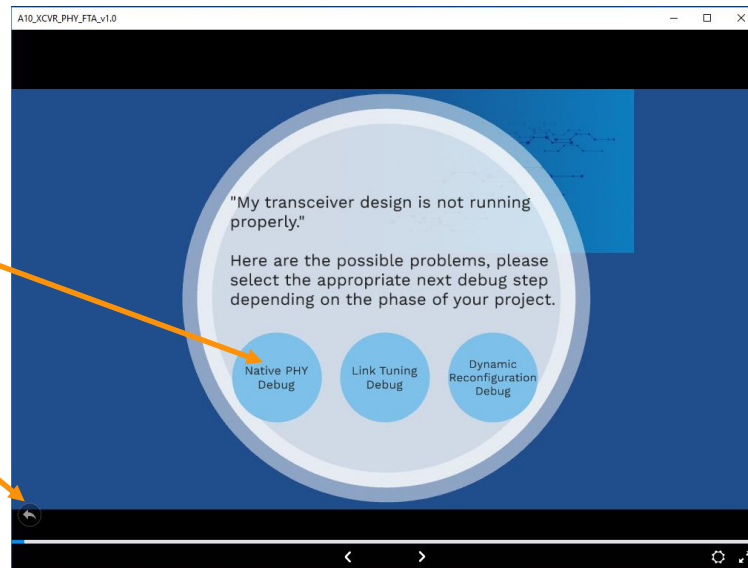


# Next Level (1/3)

The next level shows three debug options depending on the nature of the issue you are facing.

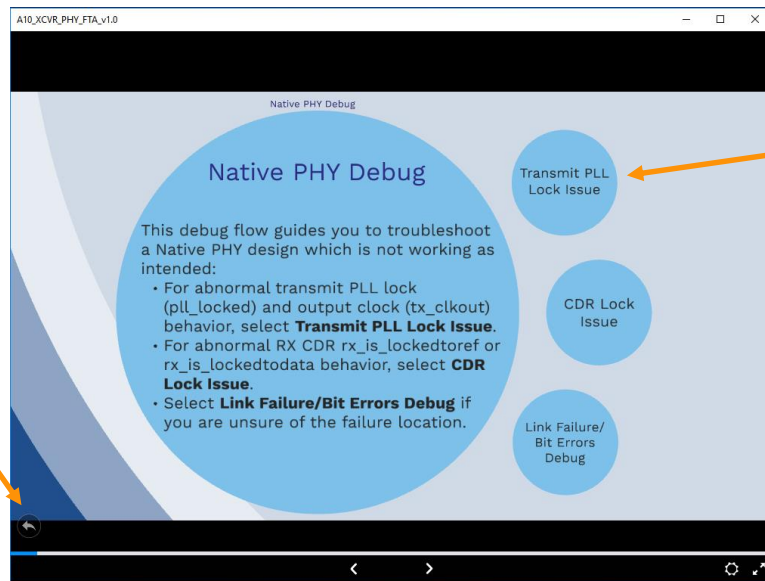
Click the middle of the blue circle to select the debug option

Click to go back to the previous level



# Next Level (2/3)

For example, if you select Native PHY Debug, you will see the next level of debug options for Native PHY Debug, depending on the nature of the issue.



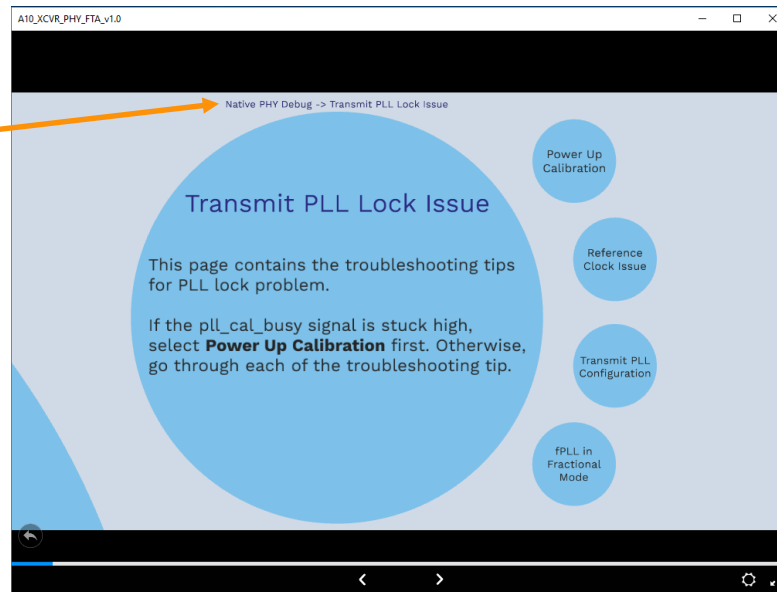
Click to go back to the previous level

Click the blue circle to select the debug option

# Next Level (3/3)

For example, if you select Transmit PLL Lock Issue, you will see the debug options focus on troubleshooting PLL lock issue.

Bread crumb to show the debug path

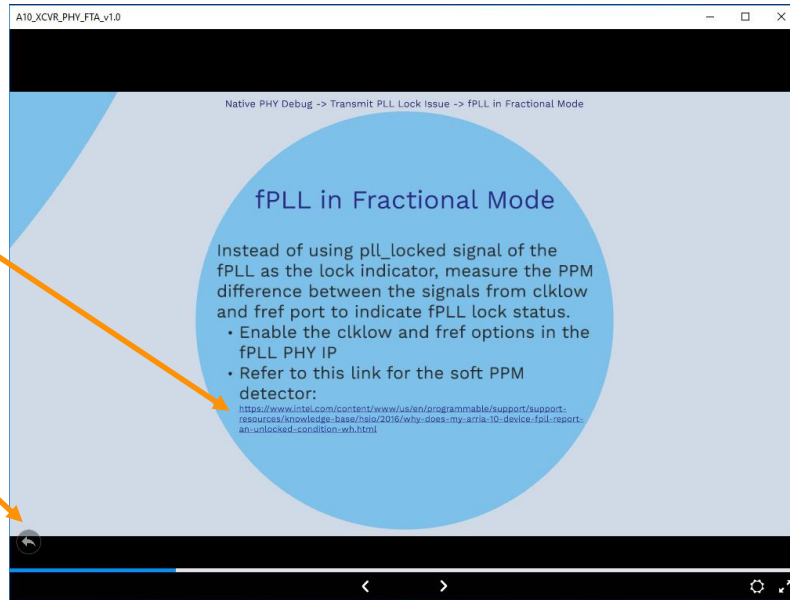


# Example of Lowest Level Debug

At the lowest level, you won't see the next level debug option. For some of the debug tests, links are given to provide more information.

Link to Intel website for more relevant information

Click to go back to the previous level



# Revision History

Date	Revision	Description of Changes
November 2018	1.0	Initial release



# What if the Tool Does Not Resolve the Issue ?

If the issue is still not resolved after implementing the debug tests in this tool, please use **Intel Premier Support**

<https://www.intel.com/content/www/us/en/my-intel/sign-in.html?source=&redirect=https%3A%2F%2Fwww.intel.com%2Fcontent%2Fwww%2Fus%2Fen%2Fsecure%2Fmy-intel%2Fdashboard.html>

# Legal Disclaimers/Acknowledgements

Intel technologies' features and benefits depend on system configuration and may require enabled hardware, software, or service activation. Performance varies depending on system configuration. Check with your system manufacturer or retailer or learn more at [www.intel.com](http://www.intel.com).

Intel, the Intel logo, Intel Inside, the Intel Inside mark and logo, Altera, Arria, Cyclone, Enpirion, Experience What's Inside, Hyperflex, Intel Atom, Intel Core, Intel Xeon, MAX, Nios, Quartus, Stratix words and logos are trademarks of Intel Corporation or its subsidiaries in the U.S. and/or other countries.

\*Other names and brands may be claimed as the property of others

© Intel Corporation 2018

