

Breakout Session

# How AEWIN Use Intel Technologies for Edge Solution

Rachel Feng, AEWIN



# Product Line

## Network Appliance

### Rackmount

*NIC Module, Crypto Accelerator*



### Module

*NIC, QAT, PoE...*



### Desktop / Din-rail

*4G/5G/Wifi6, Fanless*



Security,  
ADC,  
SD-WAN

## Server

### General Purpose

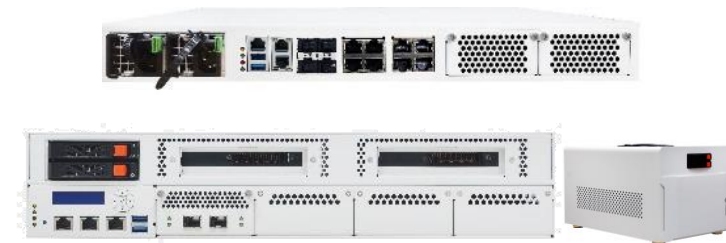
*Hyper Converged, Storage, PCIe at Rear*



Proxy, Cache,  
Logging, Mail,  
Backup, VDI

### Edge Computing

*Front I/O, Short Depth, GPU/FPGA Supports*



Edge AI,  
5G RAN,  
MEC, AIoT

# End to End Networking Product Portfolio

## 5G & Cloud

On Premise  
uCPE, SD-WAN,  
Connections...



Access Network / Edge  
vRAN, MEC, Cloud Gaming,  
AR/VR, Low Latency...



Central Office / Core  
vEPC, vIMS, vBNG,  
vCMTS, vCDN...



DC / Public Cloud  
General Purpose,  
Compute & Storage



Intel® ATOM® Fanless option

Intel® Xeon® Scalable Processors, <600mm  
Intel® Xeon® D, <450mm

Intel® Xeon® Scalable Processors, <600mm

Intel® Xeon® Scalable Processors, <800mm

## Network Security & Management

Desktop

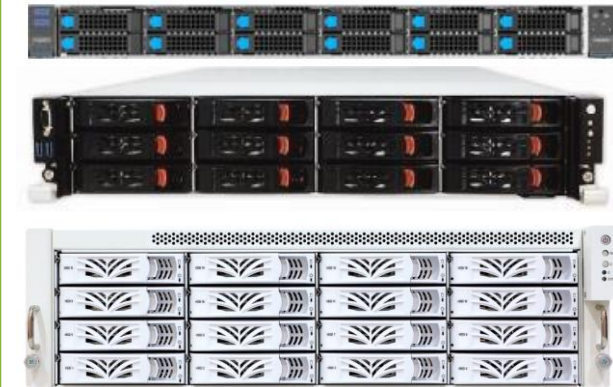
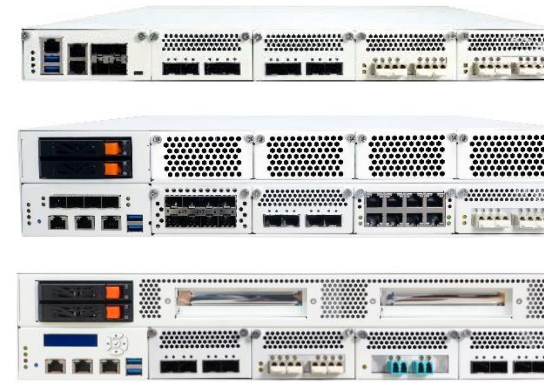
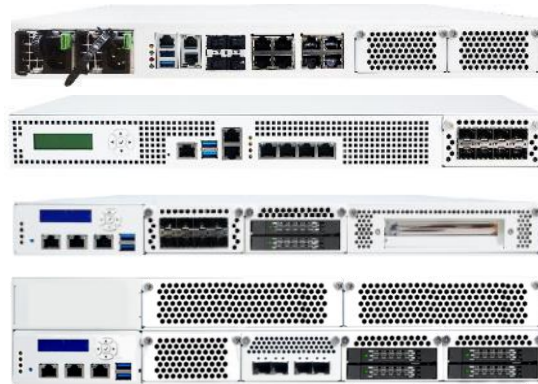
1U/2U Edge Computing

1U/2U Edge Computing

1U/2U~ Server

SD-WAN, Firewall, UTM, DPI, IPS, IDS, ADC, Load Balancer...

Proxy, Cache, SIEM...



Intel, the Intel logo, and Intel Xeon are trademarks of Intel Corporation or its subsidiaries.

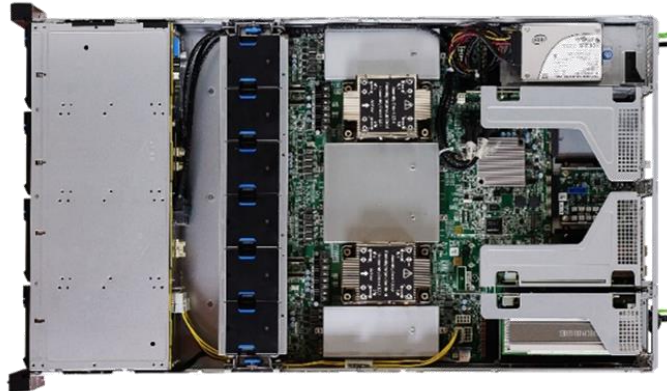
# 3rd Generation Intel® Xeon® Scalable Processors Product Line



BIS-5221

*General Purpose*

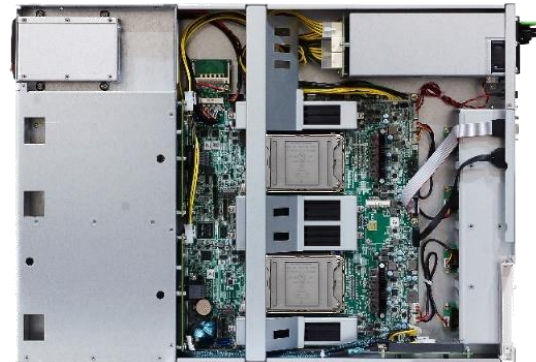
2U, 12x Drive, 10x PCIe  
(Dual Socket)



SCB-1932

*Edge Computing*

2U, 8x Front Expansion  
(Dual Socket)



SCB-1931

*Edge Computing*

1U, 4x Front Expansion  
(Single Socket)



IS-5101

*Single Socket CRB*

ATX, 5x PCIe  
(Single Socket)



Intel, the Intel logo, and Intel Xeon are trademarks of Intel Corporation or its subsidiaries.

# 3rd Generation Intel® Xeon® Scalable Processors

## New Features Supported



Intel® Optane™ Persistent Memory (PMem) 200 Series



Secure Boot Module  
- based on Intel® Platform  
Firmware Resilience (Intel® PFR)



PCIe Gen4 Device  
(NVMe, Accelerator card)



~200G NIC Module - based on Intel® Ethernet Controller E810 PCIe Gen4 Ethernet Controller



8x 10GbE



4x 25GbE






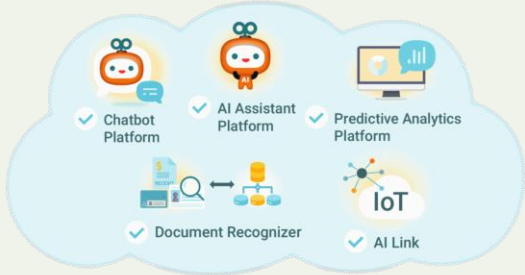
1/2x 100GbE



x16 lanes

Intel, the Intel logo, Intel Optane, and Xeon are trademarks of Intel Corporation or its subsidiaries.

# Edge AI Use Case Smart City, Smart Office

Segment	Smart City	Smart Hospital	Smart Office
Application	VAS (multi-obj, tracking) TMS (volume, violation ticket) LPDR (license plate)	Area Access Control, Movement, Density	NLP Document Recognition, ChatBot
Edge Compute	Real time analytics	On premise analytics	Quick batch process
System			
Customer			

# AEWIN x Smart City

Video analytics and deep learning engine on AEWIN Edge AI servers



Monitor Output / Console



Traffic Control Monitoring



SCB-1932



Video Stream or Camera

*The application uses video analytics and deep learning to detect accidents and abnormal activities to enhance the safety of the production line. Using AI to do Traffic Control & Area Access Control through AEWIN solutions.*

## Features

- Support 3rd Gen Intel Xeon Scalable Processor(Ice Lake-SP), Socket P+ 4189pin
- Support Max 2TB DDR4 2933/3200MHz & Optane DC PersistentMemory
- Max support 8x PCIe Gen4 x8 slots for Network Expansion Module
- Support BMC/IPMI& hardware One-Key Bypass function

Intel, the Intel logo and Xeon are trademarks of Intel Corporation or its subsidiaries.



# AEWIN x Smart Hospital

Local AI processing keeps patient data confidential



BIS-5101

## Features

- 4.5U Rack-mountable Workstation System
- Single 3rd Gen Intel® Xeon® Scalable Processors up to 205W TDP
- 8x DDR4 RDIMM/LRDIMM Memory slots
- Support up to 2x dual-slot+ GPUs or 5x single-slot GPUs
- Up to 2x 80PLUS Platinum Certified 1200W CRPS



Monitoring and Alarm

*Accelerated AI in medical biometric monitoring. Medical monitoring has strict regulation regarding privacy. Local accelerated processing enhances local AI compute capacity for real-time monitoring and processing of patient biometrics.*

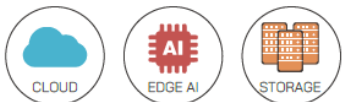
Biometric Monitors



Example



Bluetooth Hub



Intel, the Intel logo and Xeon are trademarks of Intel Corporation or its subsidiaries.



# AEWIN x Smart Office

Accelerated AI & NLP processing



BIS-5101

## Features

- 4.5U Rack-mountable Workstation System
- Single 3rd Gen Intel® Xeon® Scalable Processors up to 205W TDP
- 8x DDR4 RDIMM/LRDIMM Memory slots
- Support up to 2x dual-slot+ GPUs or 5x single-slot GPUs
- Up to 2x 80PLUS Platinum Certified 1200W CRPS



Output display



Documents

*AI assisted document recognition solutions on AEWIN hardware. With the brilliant augmentation of existing technology with AI. AEWIN provides miniaturized systems to enable deployment anywhere.*



Intel, the Intel logo and Xeon are trademarks of Intel Corporation or its subsidiaries.



*Networking Mastery*

**THANK YOU !!**

***AEWIN***

[Sales@aewin.com](mailto:Sales@aewin.com) [www.aewin.com](http://www.aewin.com)

# Disclaimer

Intel, the Intel logo, and other Intel marks are trademarks of Intel Corporation or its subsidiaries.

Other names and brands may be claimed as the property of others.

The background features a complex, abstract pattern of thin, overlapping lines in shades of blue, purple, and gold. These lines create a sense of motion and depth, resembling a digital or fiber-optic network. A solid dark blue rectangular box is positioned on the left side of the image, serving as a backdrop for the text.

Thank you  
for watching!