

Breakout Session

Embedded Computing Systems - Software

Simon Borger, Prodrive Technologies

The logo for Prodrive Technologies, featuring a stylized blue square icon to the left of the text. The word "PRODRIVE" is in a large, bold, blue sans-serif font, and "TECHNOLOGIES" is in a smaller, blue sans-serif font below it.

PRODRIVE
TECHNOLOGIES

Embedded Computing Systems – Program

1 Long Lifecycle

- Committing to lifecycles of 10+ years
- Embedded computing is key market

2 Reliable

- Reliability is key for our customer's application

3 Certified

- CE, FCC, KC, CCC, PSE, BSMI
- SEMI F47, SEMI S2, SEMI S8

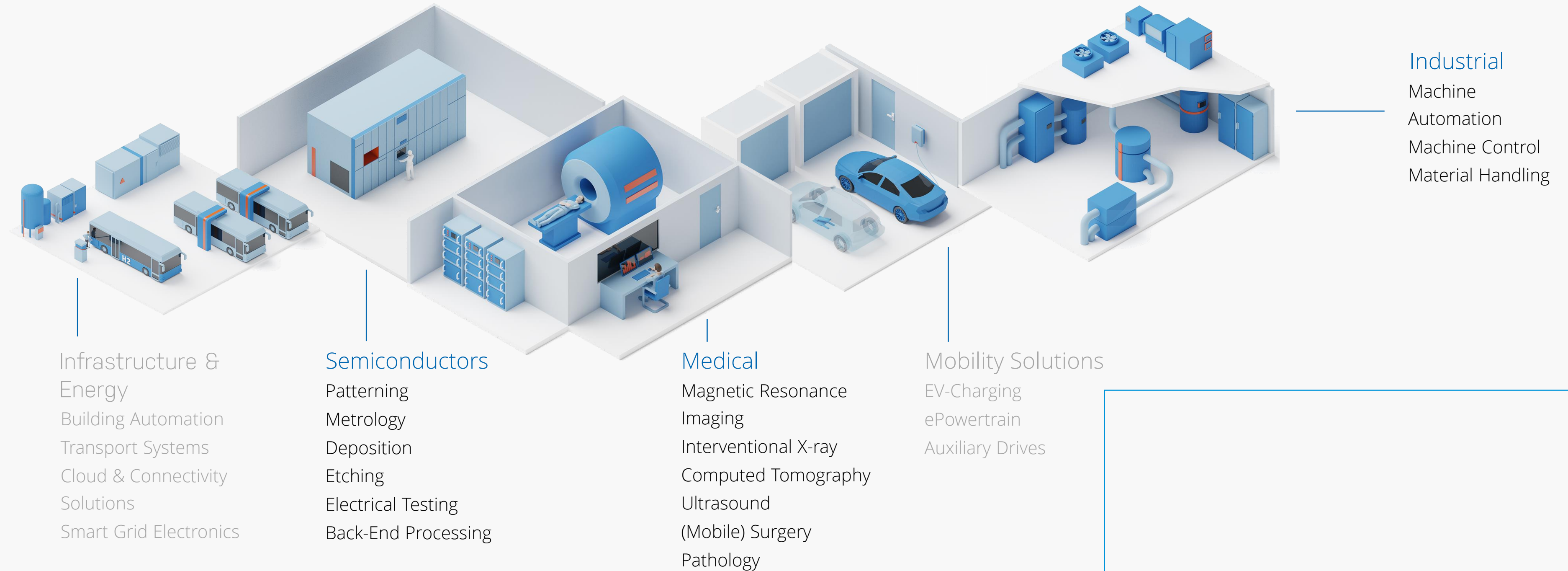
4 Customized

- Off-the-shelf platforms can be tailored to customer requirements



Markets

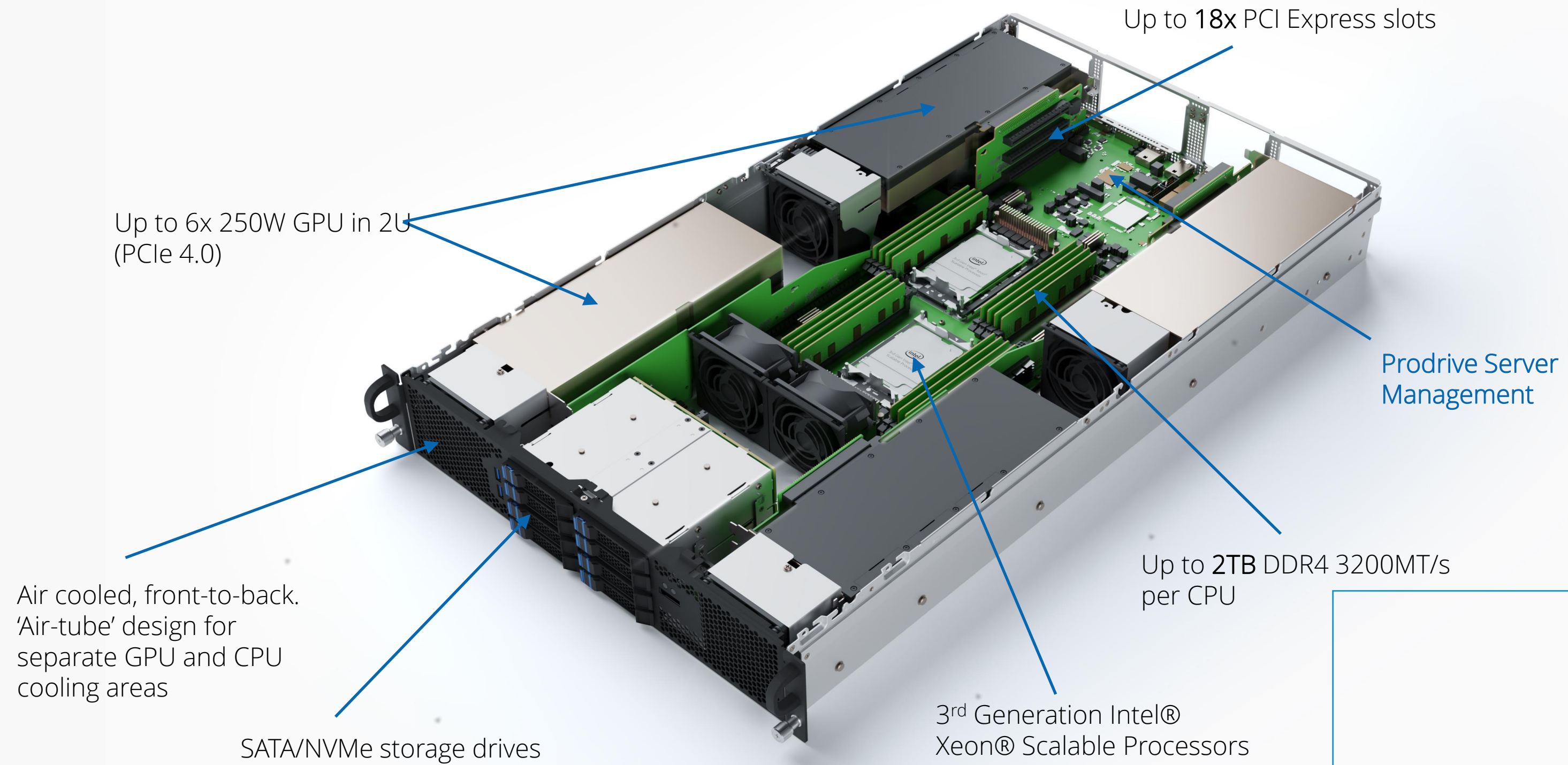
Creating meaningful technologies that make the world work



Prodrive Zeus Third Gen Scalable Server



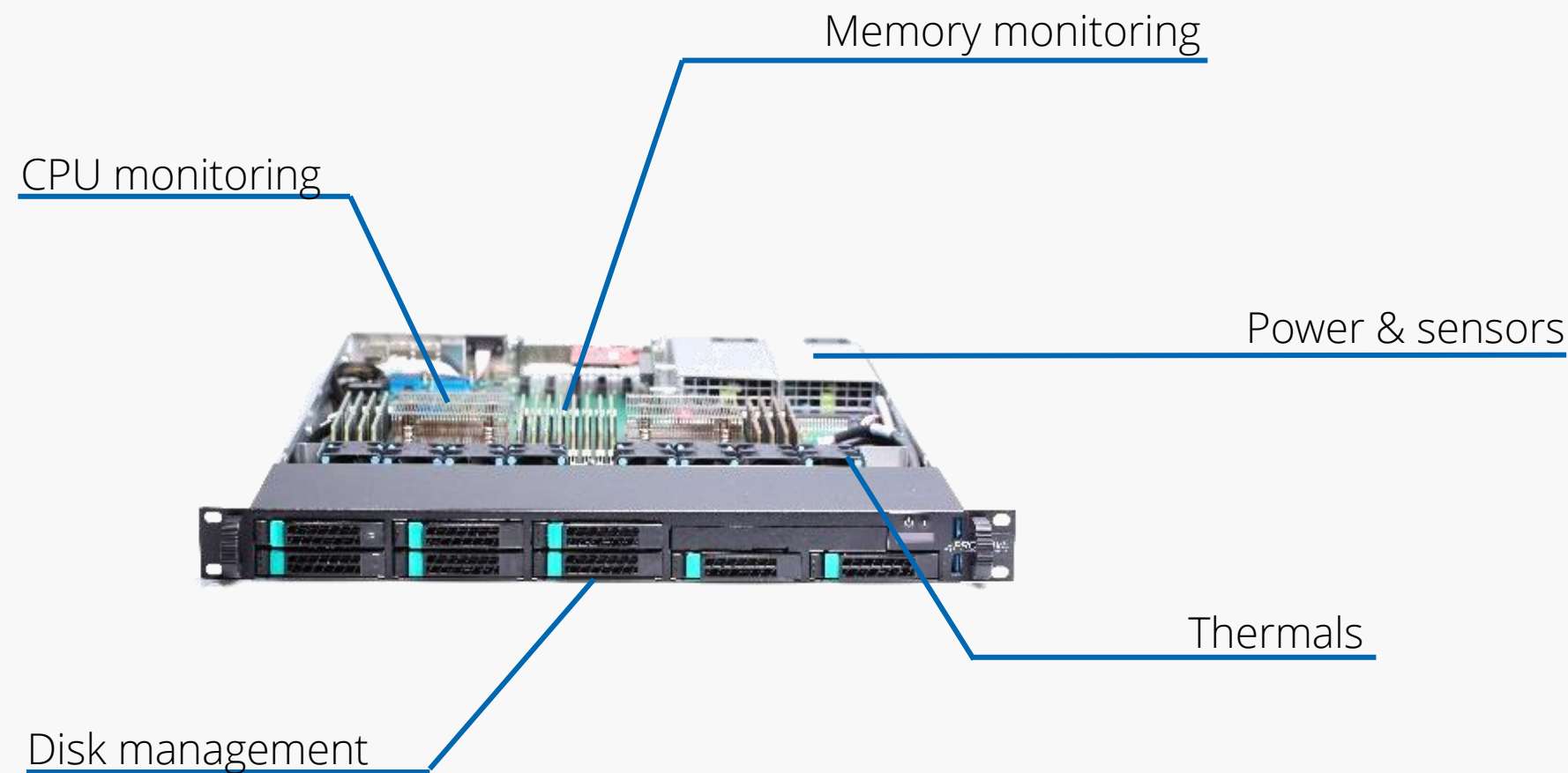
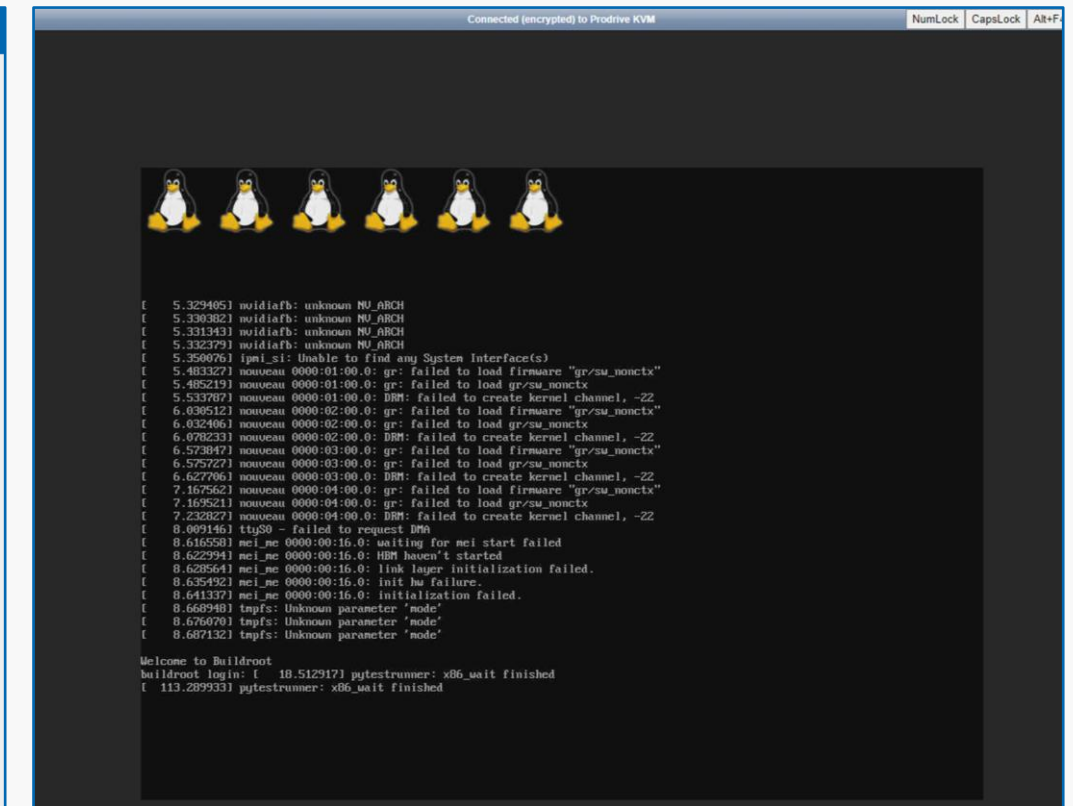
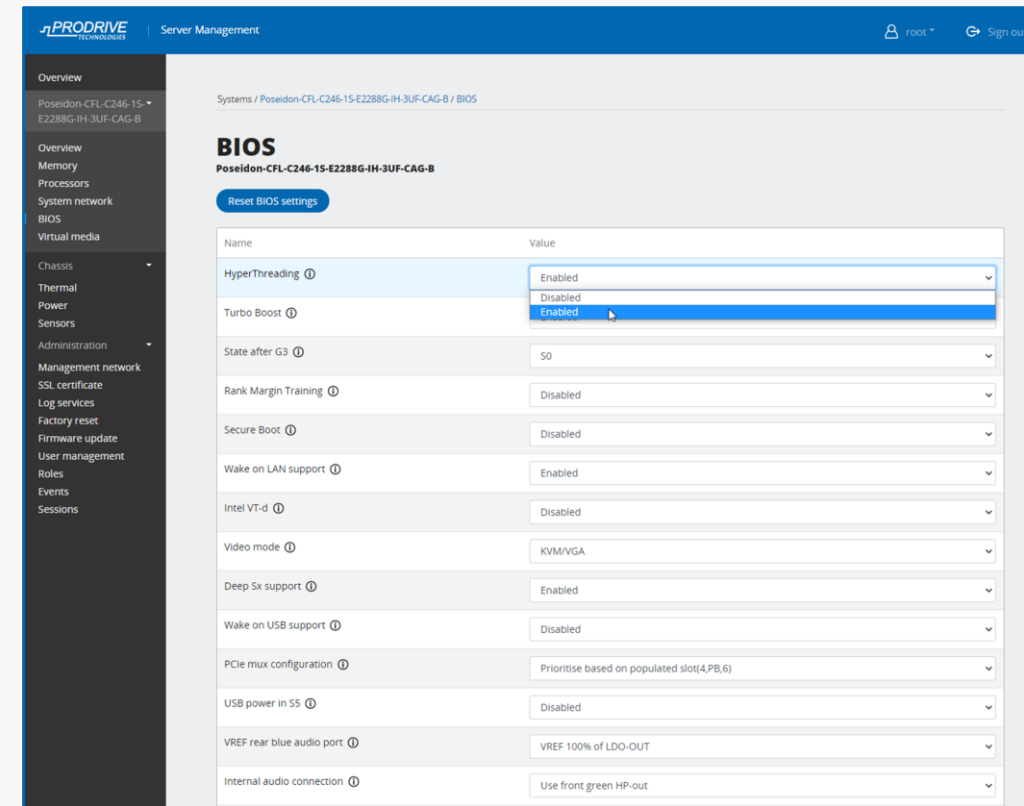
Samples available 21Q3



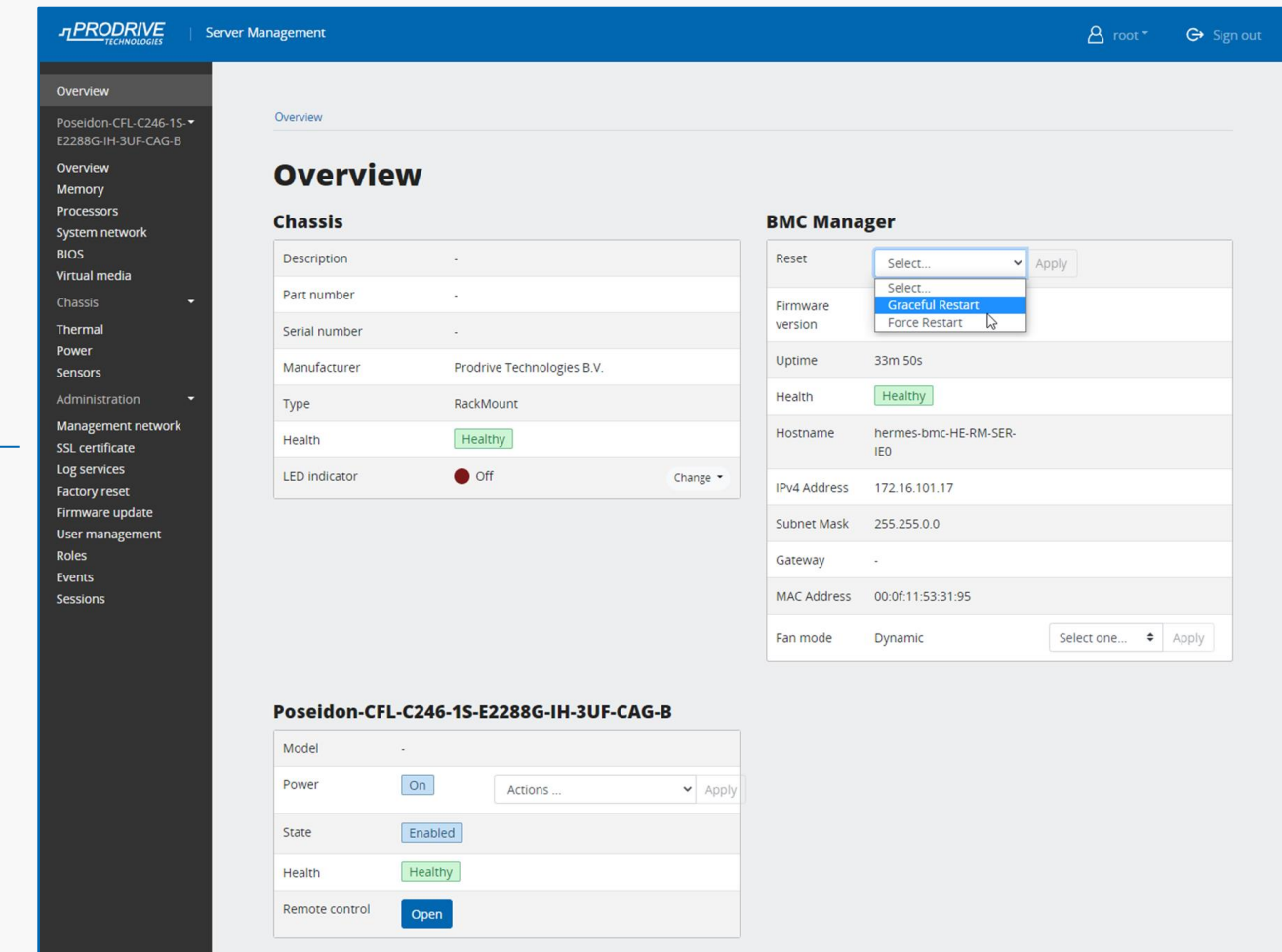
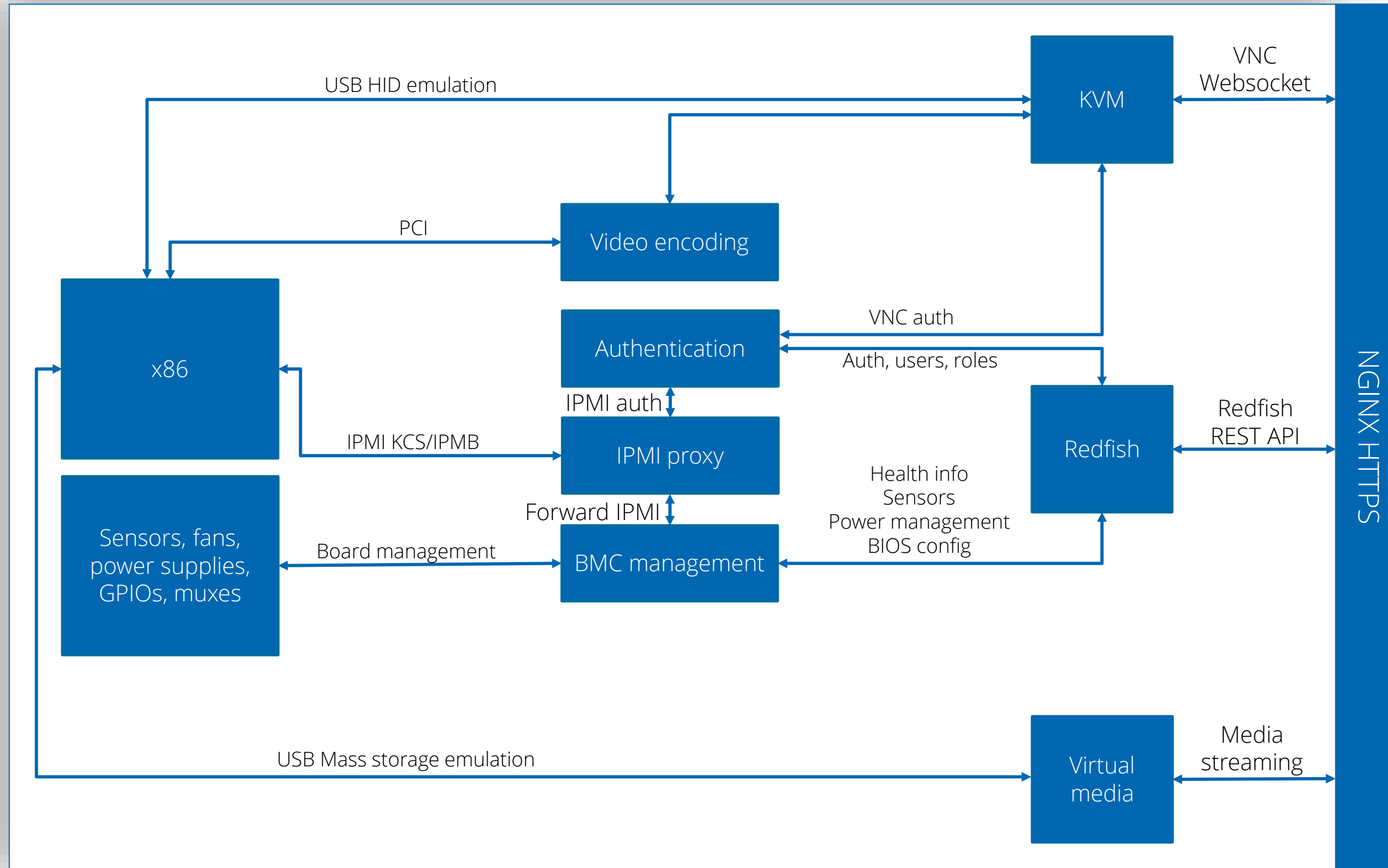
Prodrive Server Management

Out-of-band remote management

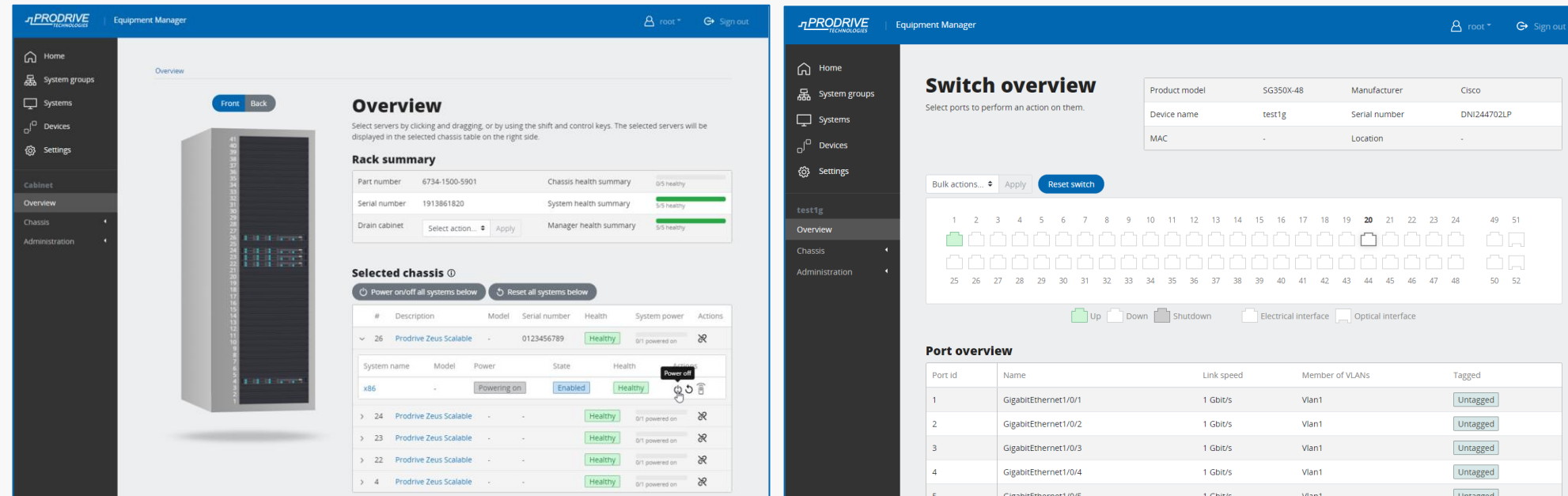
- BIOS configuration
- Virtual media
- Remote KVM
- Firmware upgrades
- Logging & events
- Inventory management
- BMC configuration
- Redfish compliant API



Prodrive Server Management

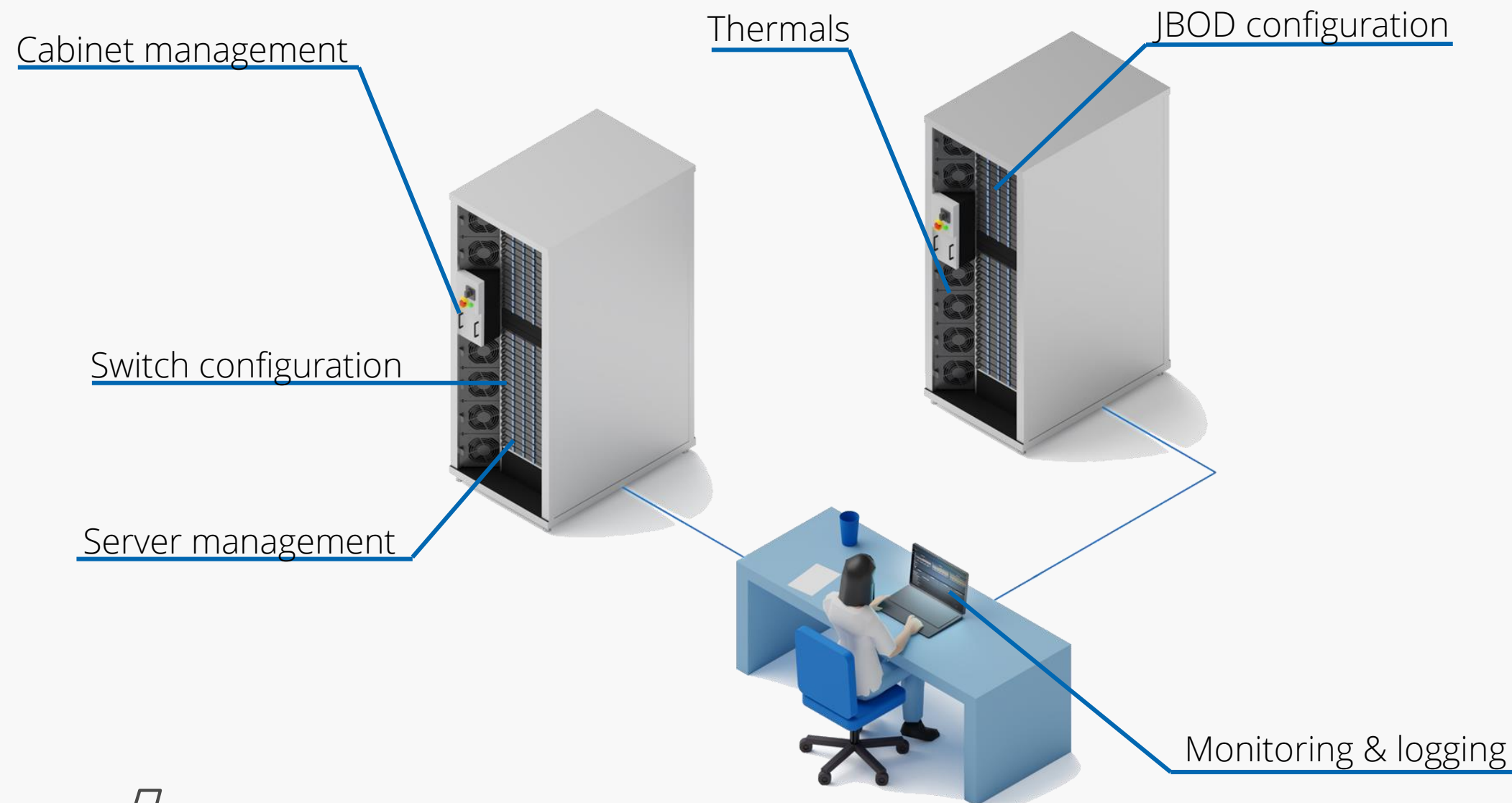


Prodrive Centralized Management



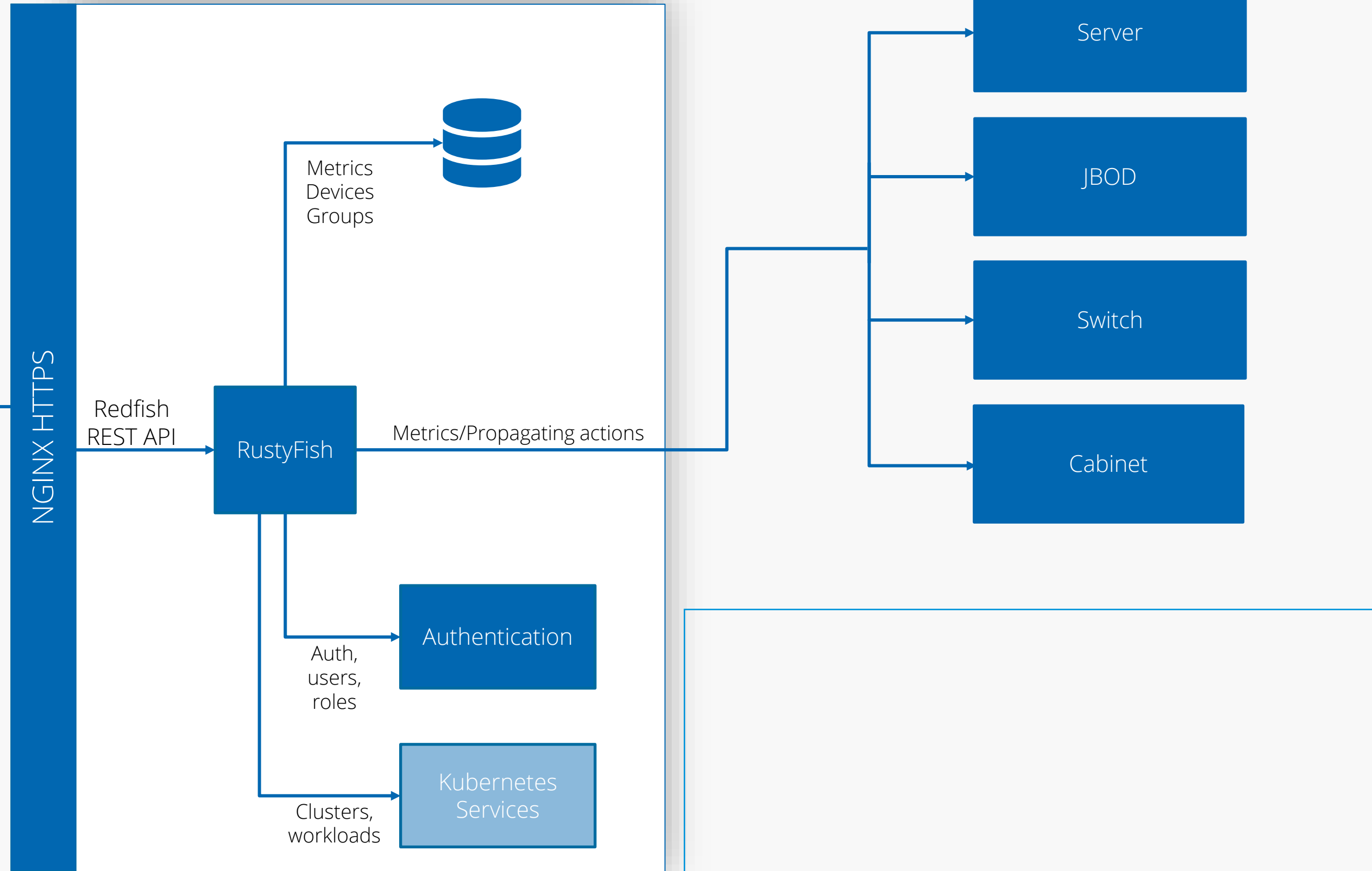
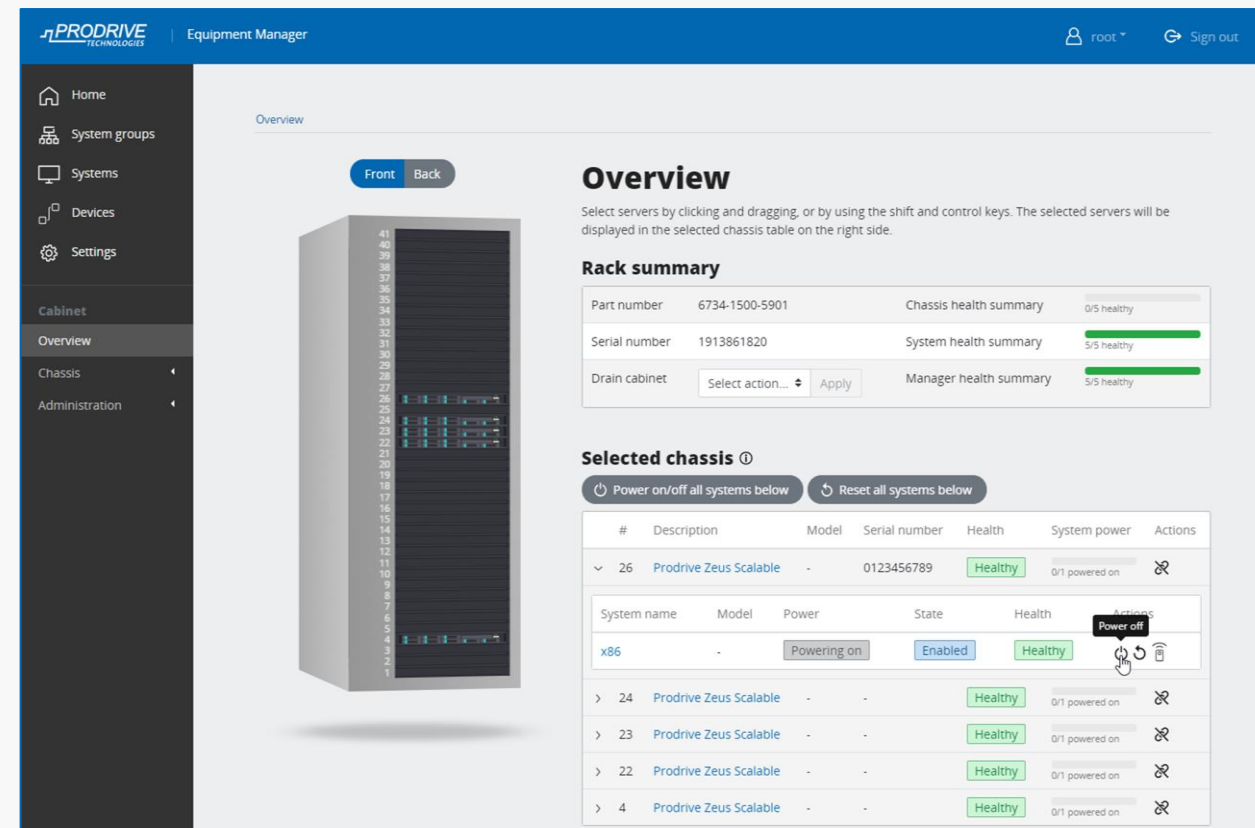
Multi-node and multi-rack management

- Bulk management
- Diagnostics
- Events
- Aggregated Redfish compliant API



Prodrive Centralized Management

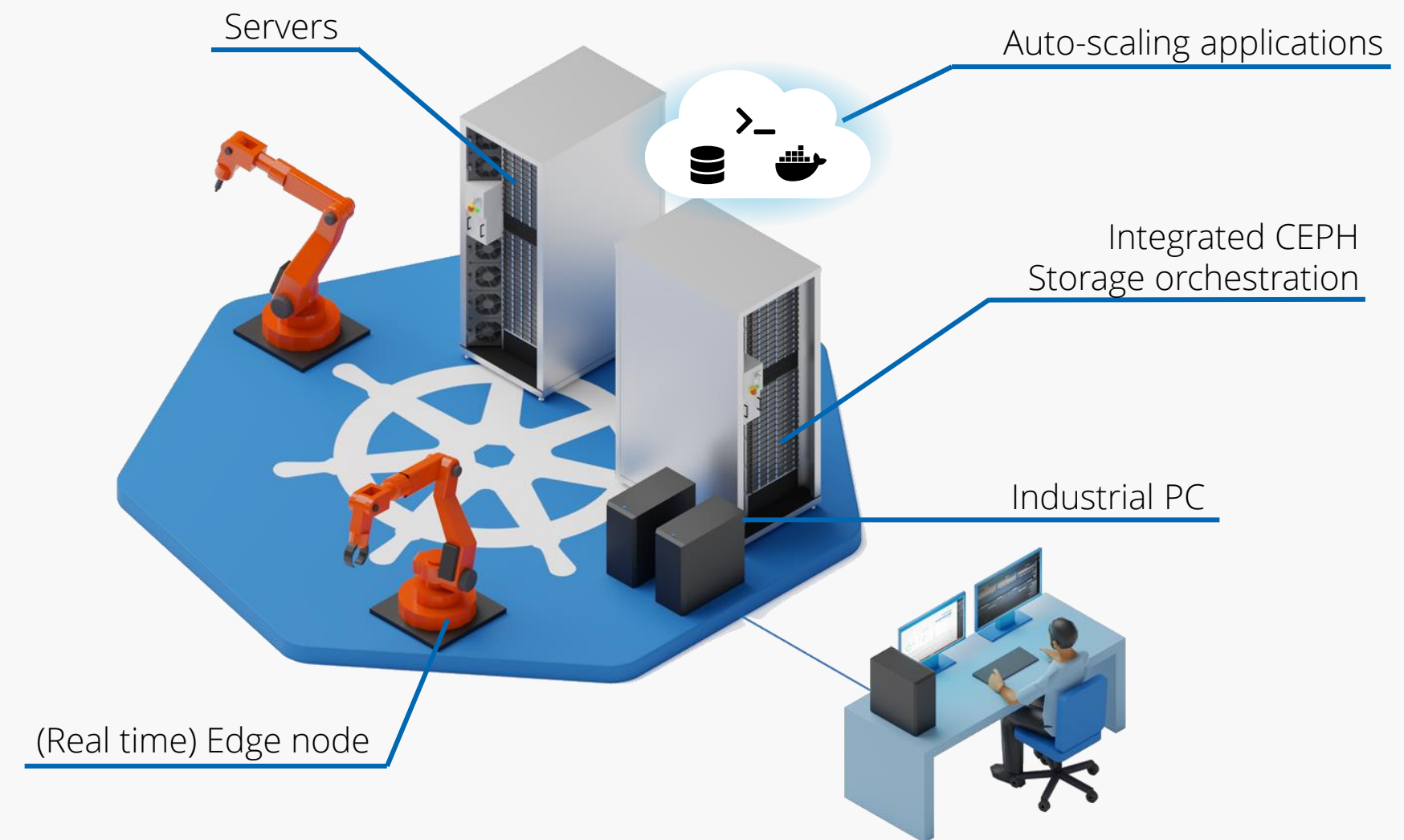
```
GET /redfish/v1/Chassis/{ChassisId}/Thermal
{
  "@odata.id": "/redfish/v1/Thermal/79d387c8-19a0-4c54-9f0c",
  "@odata.context": "/redfish/v1/$metadata#Thermal.Thermal",
  "@odata.type": "#Thermal.v1_4_0.Thermal",
  "Id": "Thermal",
  "Name": "Thermal",
  "Status": {
    "Health": "OK",
    "HealthRollup": null,
    "State": null
  },
  ...
}
```



Prodrive Kubernetes Services

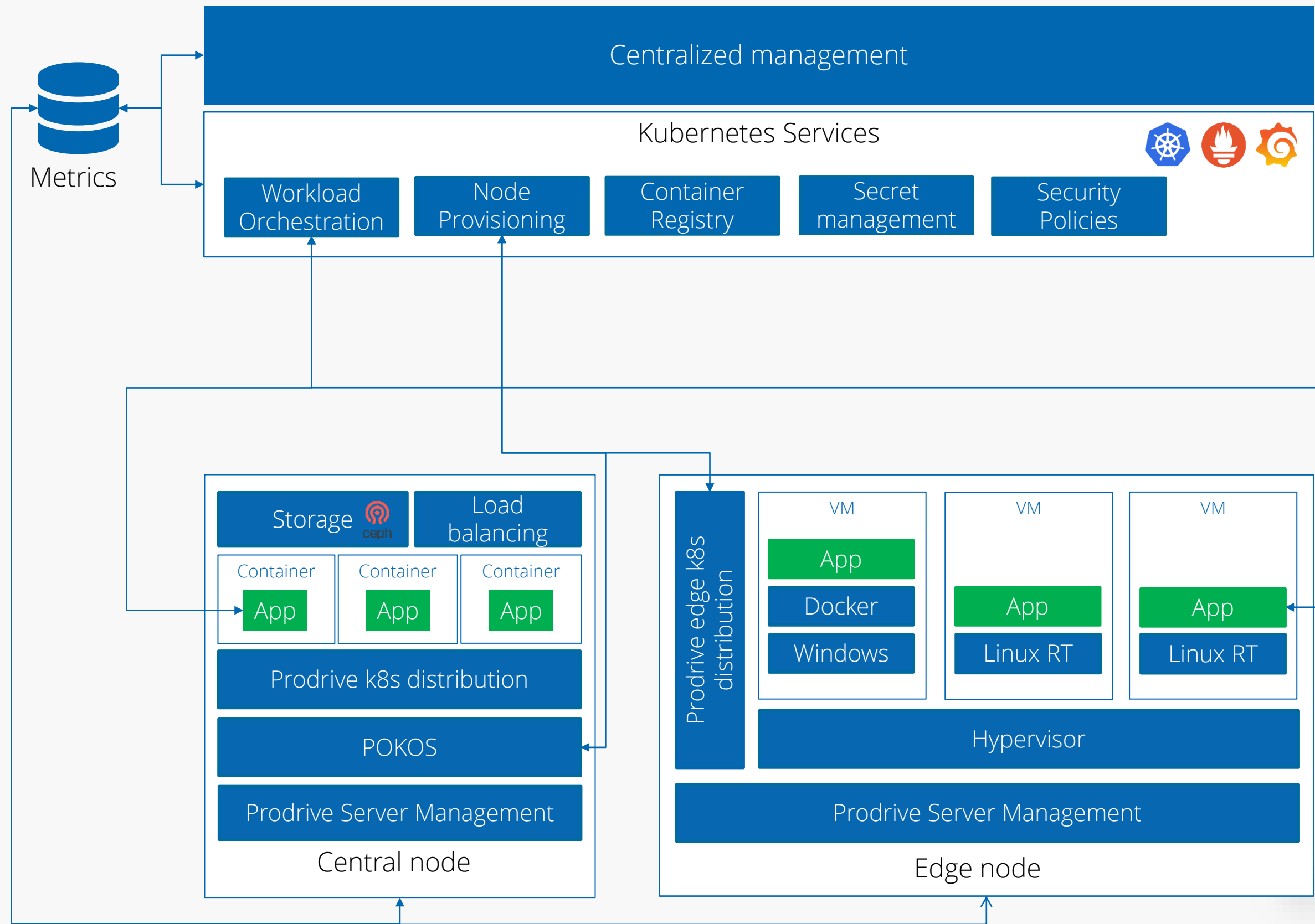
Kubernetes-based container orchestration

- Scalability
Up to 20% savings on hardware costs*
- Availability
Reduce downtime up to 25%*
- Fully managed
Up to \$100k less development cost compared to in-house*
- Air-gapped
- Integrated CEPH storage orchestration
- Turn-key cluster provisioning
- Network aware workload scheduling

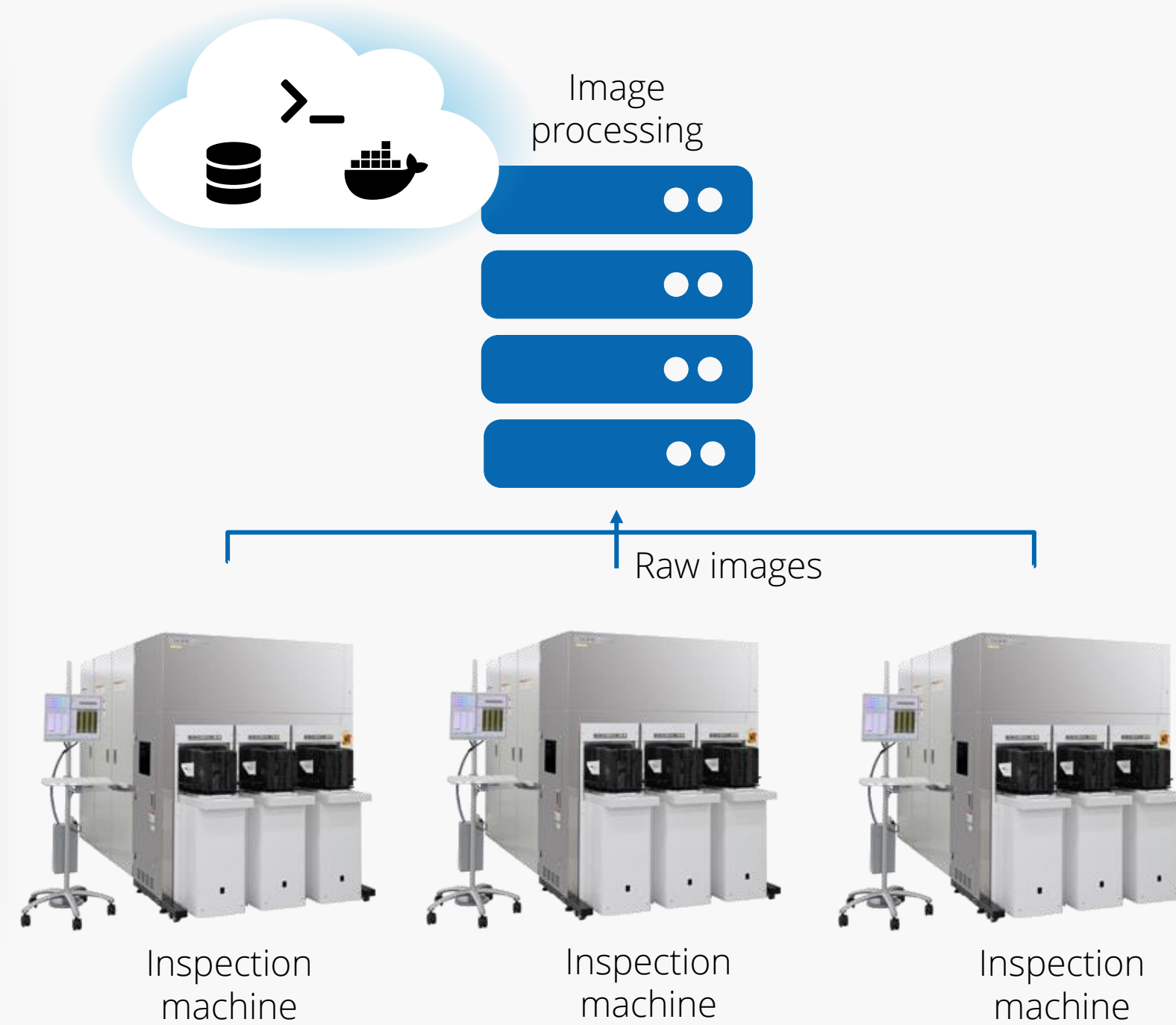
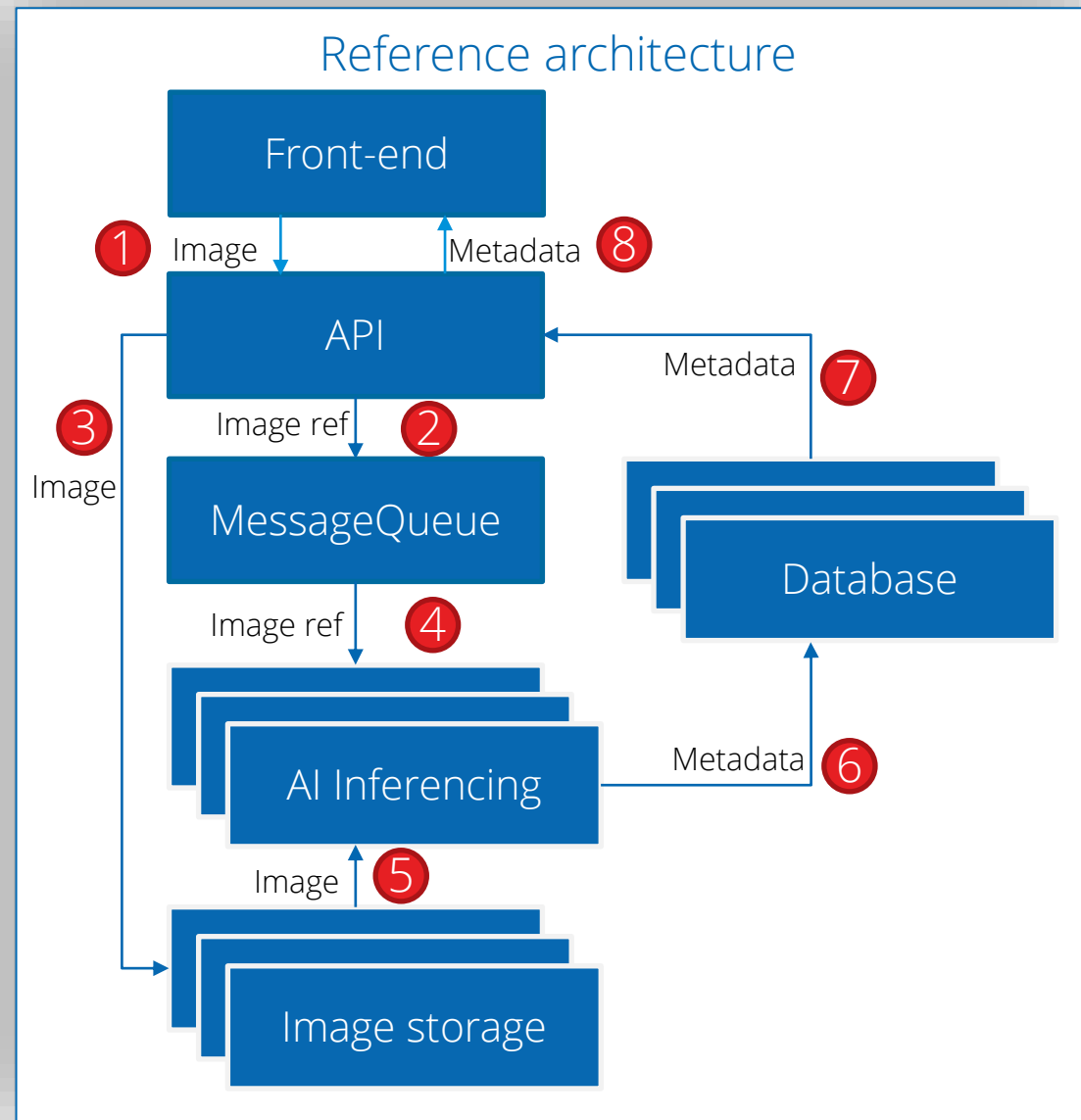


*Compared to bare metal deployments; use case dependent

Prodrive Kubernetes Services

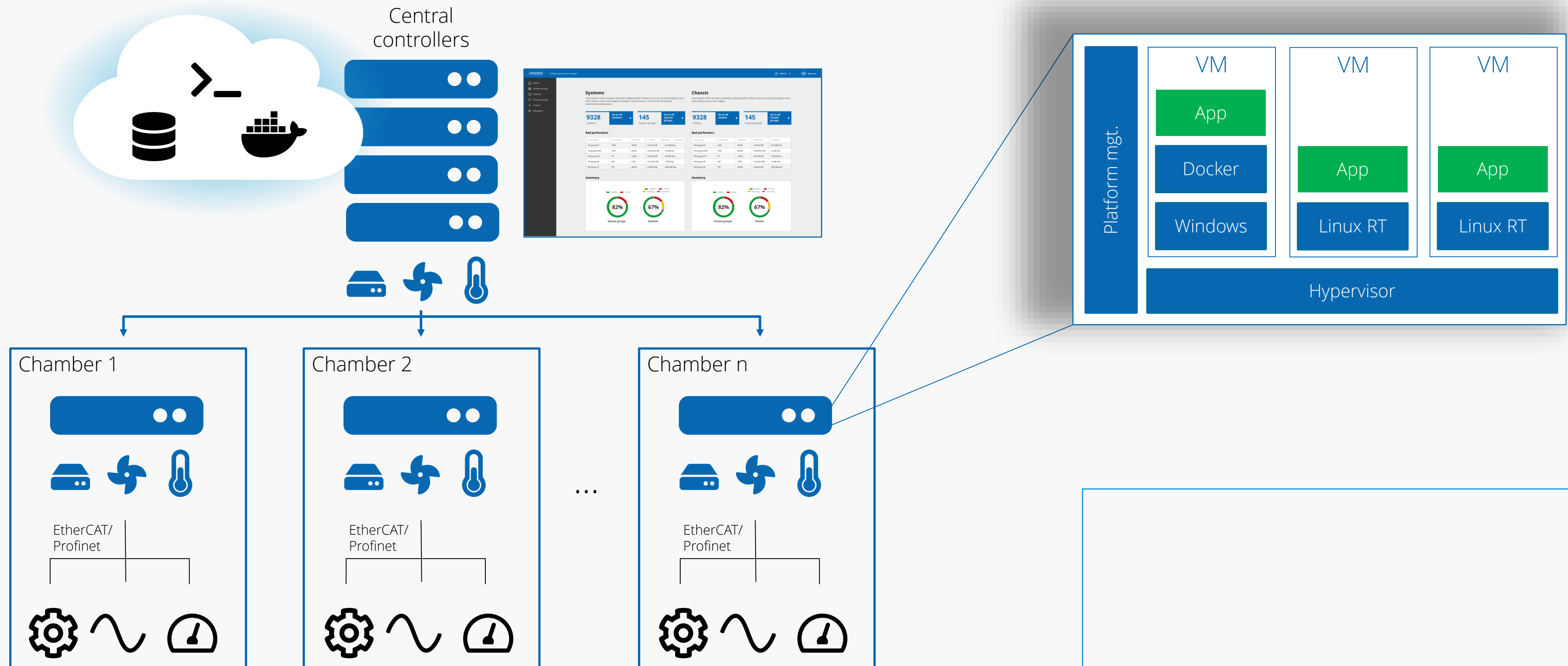


Use case – Image processing



- Centralized image processing
- No hard real time requirements
- Image throughput must keep up with produced image rate
- Limited maintenance windows, downtime is unacceptable
- System should support adding more inspection machines

Use case - (Real time) Edge computing



Interested?

More info & demo booking

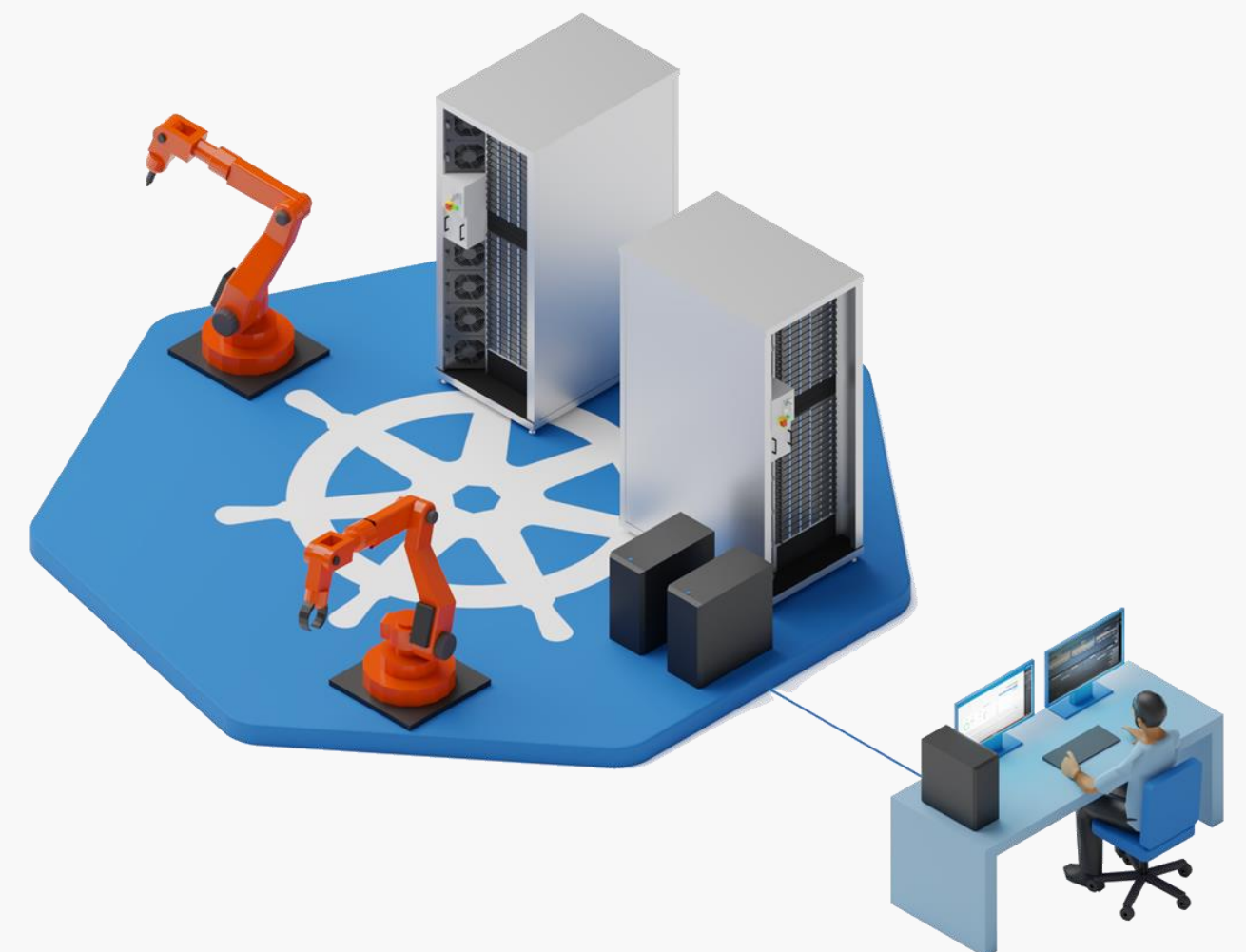
<https://prodrive-technologies.com/products/embedded-computing-systems/software/prodrive-kubernetes-services/>

Direct Contact

Simon Borger

simon.borger@prodrive-technologies.com

+31 (0) 40 2676200



Disclaimer

Intel, the Intel logo, and other Intel marks are trademarks of Intel Corporation or its subsidiaries.

Other names and brands may be claimed as the property of others.

The background features a complex, abstract pattern of thin, overlapping lines in shades of blue, purple, and gold. These lines create a sense of movement and depth, resembling a digital or fiber-optic network. A solid blue rectangular box is positioned on the left side of the image, containing the text.

Thank you
for watching!